



Retrofit DataView

Control system for Böhler die-casting machines.

Die Casting Service.

Improved handling and control.

A DataView retrofit will help you to improve handling and control – today and for your future requirements.

DataView, the control system for Böhler die-casting machines, redefines the human-machine interface. With a 21" multi-touch display, the control unit offers clear information at all times. Intuitive operation simplifies important activities, such as machine setup, process monitoring and diagnostics. With quick and easy control and precise monitoring, DataView helps you increase efficiency.

The DataView control system is the basis for using our digital services and is the first step towards our vision of the Digital Cell, with 0% scrap, -40% cycle time and 24/7 availability.

Benefits for your foundry

- **OEE improvement** – optimize your processes thanks to clearly arranged diagnostic diagrams
- **Quality assurance** – due to traceability of process data
- **Cell availability** – thanks to clear representation of the individual peripheral devices
- **User-friendliness** – thanks to intuitive operation via multi-touch display and manual elements.

Scope of supply for retrofit of DataView control system.

Retrofit solution

New, seminal process flow control (new PLC and I/O cards)

Real time control of injection unit

Ready for digital services:

- Bühler Insights Die Casting Dashboard
- Bühler Insights Downtime Analysis

Modern user interface with 21" multi touch panel

Implementation of existing basic functionalities

Implementation of existing safety functionalities

Complete documentation

Project management, installation and commissioning

Retrofit of additional functionalities & peripherals

Integration of peripheral devices

Retrofit of all control components

Renewal of power components

Renewal of safety elements in the control cabinet

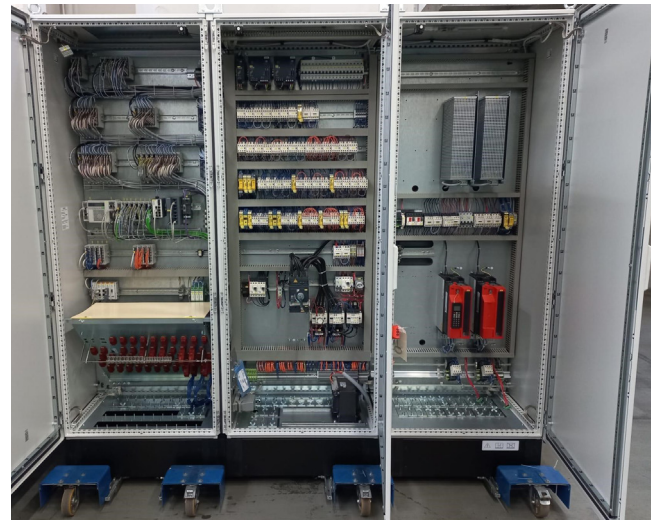
Cable set between control cabinet and die-casting machine

EG declaration of conformity

DataView Full



Optional



Example of control cabinet with a DataView Full retrofit



Intuitive DataView control unit

Warranty

- 12 months
- In order to ensure fast and smooth installation of the new DataView control system, we recommend the services of specialized Bühler control system engineers

Training

- We recommend a DataView user training
- Please get in touch with us to specify your personal training needs

System downtime

- The control system retrofit is done on-site on the machine
- Downtime is approx. 2 weeks for installation and replacement of the cable set

Delivery time & reference prices on request

Bühler AG

Die Casting
CH-9240 Uzwil, Switzerland
buhlergroup.com/die-casting

T +41 71 955 37 90
F +41 71 955 66 11
dc.retrofit@buhlergroup.com

