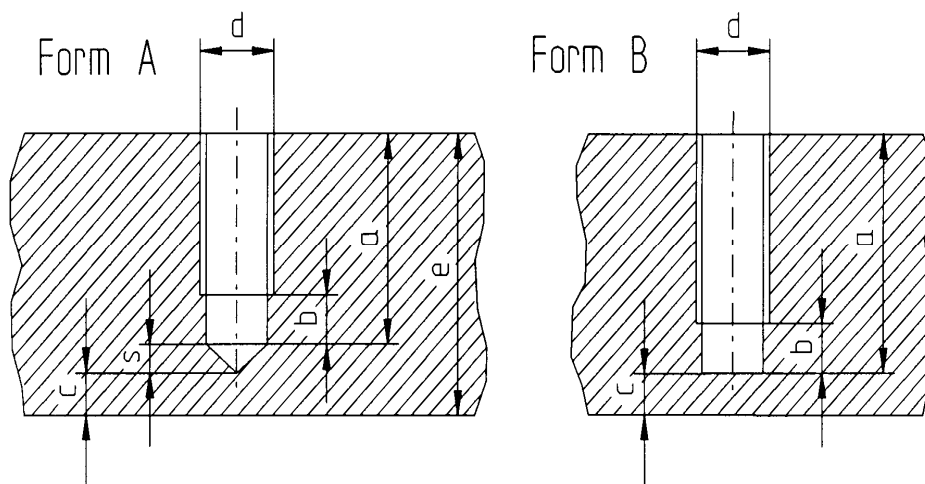


This BLOA standard specifies tapped blind holes for thin-walled components. These will not comply with the measures stipulated for threaded holes in DIN 76-1.

Special thread taps with a particularly short cut-off length must be used for manufacturing.

This standard should only be used when it is necessary to use exceptional small drilling depths.

For economic reasons form "A" should be selected whenever possible.



Dimensions a, d, e = Given in drawing for specifying the dimensions of the threaded hole

Dimensions c, s = Dimensions to check the residual wall thickness - c, not specified in drawing

Dimension b = Minimum dimensions for thread runout. Dimension to check the required threaded length, not specified in drawing

d	b 1) mm	s 2) mm	c 1) mm 2)
M 4	1.4	0.9	2
M 5	1.6	1.2	
M 6	2	1.4	
M 8	2.5	1.9	
M 10	3	2.4	3
M 12	3.5	2.9	
M 16	4	3.9	5
M 20	5	4.9	
M 24	6	5.9	

1) Minimum dimensions

2) Applies for all materials