



High hygiene with stainless steel sieve frame

### **Bran finisher MKLA-30/80**

Stainless steel sieve frames for the MKLA-30/80 bran finisher improves hygiene, increases food safety and reduces the time required for changing the sieve.

#### **Efficiency and food safety**

The requirements in the area of hygiene and food safety are increasingly demanding. For existing plants, Bühler meets these requirements with the retrofit packages. The SaniBran retrofit package replaces the wooden sieve frames with round stainless steel frames. Clamp connections replace fixed connections between frame and sieve, which leads to a quick sieve change.

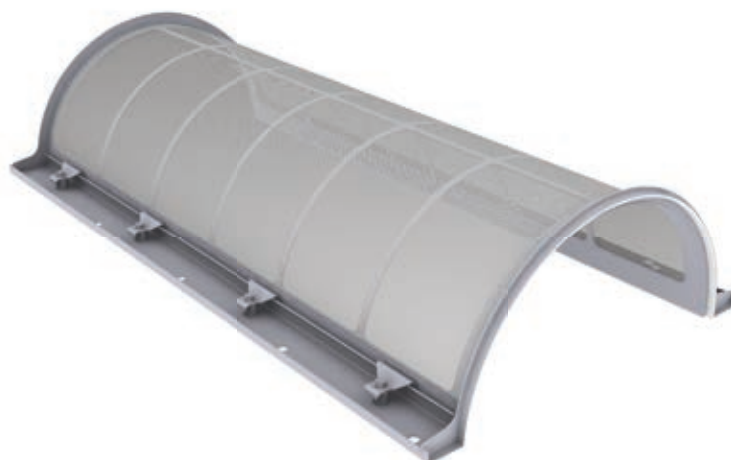
#### **The package**

The retrofit package includes one round stainless steel sieve frame including one sieve plate of your choice and a conversion instruction.

#### **Benefits**

- Increased hygiene due to stainless steel sieve frame
- Easy and fast sieve change thanks to optimized fixing mechanism

# Retrofit for MKLA-30/80



Stainless steel sieve frame for the MKLA-30/80

## Ordering informationen für MKLA-30/80<sup>1</sup>

	Order number	Amount
Round stainless steel sieve frame including sieve plate <sup>2</sup> (D ___)	MKLA-10123-001	
Replacement sieve plate D 0.60	MKLA-80015-810	
Replacement sieve plate D 0.75	MKLA-95059-810	
Replacement sieve plate D 1.00	MKLA-95060-810	
Replacement sieve plate D 1.25	MKLA-95061-810	
Replacement sieve plate D 1.50	MKLA-95062-810	
Replacement sieve plate D 1.75	MKLA-95063-810	
Replacement sieve plate D 2.00	MKLA-95064-810	
Replacement sieve plate D 2.50	MKLA-95065-810	
Replacement sieve plate D 2.75	MKLA-95066-810	
Replacement sieve plate D 3.00	MKLA-95067-810	
Conversion instruction	MKLA-21394-1	<input type="checkbox"/> English <input type="checkbox"/> German <input type="checkbox"/> French <input type="checkbox"/> Spanish

<sup>1</sup> Two sieve frames must be ordered for dual machines.

<sup>2</sup> The sieve frame is supplied with the sieve plate already mounted. Please specify sieve plate hole diameter (D).