

# TAS spare part sets for your cleaner.



# TAS spare part sets for your cleaner.

## Boost your machine's efficiency and reliability.

Get your cleaner ready for the next harvest and proactively make sure that your machine runs smoothly at all times. With our six exclusive spare part packages, you'll be prepared for any eventualities. And thanks to myBühler, ordering parts has never been easier.

### Sealing set No. 1

Seals harden over time, which means they need to be replaced every 3 - 5 years. Sealing set no. 1 is ideal for TAS machines with a seal of the second grade / roller drains with gaskets.

LAAA cleaners until the end of 2012  
LAAB cleaners from the beginning of 2013

**Your benefits:**

- Better hygiene
- Optimized cleaning result
- More yield

**Components include:**

- Sieve flap seal
- Screen seals
- Seals for 1st type outlet
- Seals for 2nd type outlet / roll drains
- Other seals\*

| Machine         | Order no.      |
|-----------------|----------------|
| LAAA TAS 152A-2 | LAAA-13261-001 |
| LAAB TAS 152A-2 | LAAB-17707-001 |
| LAAA TAS 154A-4 | LAAA-13262-001 |
| LAAB TAS 154A-4 | LAAB-17708-001 |

| Machine         | Order no.      |
|-----------------|----------------|
| LAAA TAS 204A-4 | LAAA-13263-001 |
| LAAB TAS 204A-4 | LAAB-17709-001 |
| LAAA TAS 206A-2 | LAAA-13264-001 |
| LAAB TAS 206A-2 | LAAB-17710-001 |

| Machine         | Order no.      |
|-----------------|----------------|
| LAAA TAS 206A-6 | LAAA-13265-001 |
| LAAB TAS 206A-6 | LAAB-17711-001 |
| LAAA TAS 210A-1 | LAAA-13266-001 |
| LAAB TAS 210A-1 | LAAB-17712-001 |

### Sealing set No. 2

Seals harden over time, which means they need to be replaced every 3 - 5 years. Sealing set no. 2 is ideal for TAS machines with a seal of the second grade / roller drains through fabric hoses.

LAAB cleaner from approx. 06/2016

**Your benefits:**

- Better hygiene
- Optimized cleaning result
- More yield

**Components include:**

- Sieve flap seal
- Screen seals
- Further seals\*
- Seals for 1st type outlet

| Machine         | Order no.      |
|-----------------|----------------|
| LAAB TAS 152A-2 | LAAB-17713-001 |
| LAAB TAS 154A-4 | LAAB-17714-001 |

| Machine         | Order no.      |
|-----------------|----------------|
| LAAB TAS 204A-4 | LAAB-17715-001 |
| LAAB TAS 206A-6 | LAAB-17717-001 |

### Sealing set No. 3

Seals harden over time, which means they need to be replaced every 3 - 5 years. Sealing set no. 3 is ideal for TAS machines with a seal of the second grade / roller drains through fabric hoses depending on machine type.

LAAC cleaners from 2023

| Machine         | Order no.      |
|-----------------|----------------|
| LAAC TAS 152A-2 | LAAC-11884-001 |
| LAAC TAS 154A-4 | LAAC-11885-001 |
| LAAC TAS 204A-4 | LAAC-11886-001 |
| LAAC TAS 206A-6 | LAAC-11887-001 |

**Your benefits:**

- Better hygiene
- Optimized cleaning result
- More yield

**Components include:**

- Sieve flap seal
- Screen seals
- Further seals\*
- Seals for 1st type outlet
- Fabric hoses second grade / roller drains, depending on machine type

### Eccentric shaft set

Bearing damage can also harm the shaft, in which case the eccentric shaft set is the ideal choice.

**Your benefit:**

- Pre-assembled for easy and quick installation

**Components include:**

- Flange bearings
- Eccentric shaft pre-assembled

| Machine  | Order no.      |
|--|----------------|
| LAAA/LAAB/LAAC TAS 152A-2 / 154A-4                   | LAAB-17716-001 |
| LAAA/LAAB/LAAC TAS 204A-4 / 206A-2 / 206A-6 / 210A-1 | LAAB-17718-001 |

### Emergency kit

Save up to 20% compared to single part procurement. We recommend our emergency kit to prevent downtime caused by issues such as broken polyamide rods or torn V-belts / gear belts.

LAAA cleaners until the end of 2012  
LAAB cleaners from the beginning of 2013  
LAAC cleaners from 2023

**Your benefit:**

- Increased safety during harvest

**Components include:**

- Powertwist link V-belts
- Polyamide rods
- Rubber balls
- Gear belt set with toothed gears
- Flange bearings
- Sensor(s)

| Machine              | Order no.                            |
|----------------------|--------------------------------------|
| LAAA TAS 152A-2      | LAAA-13269-001*1<br>LAAA-13270-001*2 |
| LAAB/LAAC TAS 152A-2 | LAAB-17719-001*1<br>LAAB-17720-001*2 |
| LAAA TAS 154A-4      | LAAA-13271-001*1<br>LAAA-13272-001*2 |
| LAAB/LAAC TAS 154A-4 | LAAB-17721-001*1<br>LAAB-17722-001*2 |

| Machine              | Order no.                            |
|----------------------|--------------------------------------|
| LAAA TAS 204A-4      | LAAA-13273-001*1<br>LAAA-13274-001*2 |
| LAAB/LAAC TAS 204A-4 | LAAB-17723-001*1<br>LAAB-17724-001*2 |
| LAAA TAS 206A-2      | LAAA-13275-001*1<br>LAAA-13276-001*2 |
| LAAB/LAAC TAS 206A-2 | LAAB-17725-001*1<br>LAAB-17726-001*2 |

| Machine              | Order no.                            |
|----------------------|--------------------------------------|
| LAAA TAS 206A-6      | LAAA-13277-001*1<br>LAAA-13278-001*2 |
| LAAB/LAAC TAS 206A-6 | LAAB-17727-001*1<br>LAAB-17728-001*2 |
| LAAA TAS 210A-1      | LAAA-13279-001                       |
| LAAB/LAAC TAS 210A-1 | LAAB-17729-001                       |

\*For recirculation machines, an additional seal is required for the 1st sort discharge hopper (only for seal set no. 1)

\*1 without screen switching  
\*2 with screen switching



# Wear parts set

Save up to 10% on wear and tear sheets for the hood and inlet area. Abrasive raw materials and high dust content lead to increased wear, and in the case of worn wear plates in the inlet area, we recommend our wear parts set made of polyurethane and hardox to increase resistance.

## Your benefit:

- Higher wear resistance thanks to polyurethane and hardox

## Components include:

- Wear protection for inlet hood
- Pre-assembled inlet flap
- Protective cover for shaft
- Suspension for inlet flap

| Machine                      | Order no.      |
|------------------------------|----------------|
| LAAA/LAAB/LAAC<br>TAS 152A-2 | LAAB-17730-001 |
| LAAA/LAAB/LAAC<br>TAS 154A-4 | LAAB-17731-001 |

| Machine                               | Order no.      |
|---------------------------------------|----------------|
| LAAA/LAAB/LAAC<br>TAS 204A-4 / 210A-1 | LAAB-17732-001 |

| Machine                      | Order no.      |
|------------------------------|----------------|
| LAAA/LAAB/LAAC<br>TAS 206A-2 | LAAB-17733-001 |
| LAAA/LAAB/LAAC<br>TAS 206A-6 | LAAB-17734-001 |

# Drive set

Save up to 10% on the maintenance of your drive. Depending on the annual throughput in your system, we recommend replacing the main bearings of the sieve box every 3 - 10 years to avoid machine failures.

## Your benefit:

- Increased safety during harvest

## Components include:

- Main bearings for screen drive
- Drive shaft
- Drive belts for sieve drive
- Bearing housings
- Lubrication lines

| Machine                      | Order no.      |
|------------------------------|----------------|
| LAAA/LAAB/LAAC<br>TAS 152A-2 | LAAA-13280-001 |
| LAAA/LAAB/LAAC<br>TAS 154A-4 | LAAA-13281-001 |

| Machine                      | Order no.      |
|------------------------------|----------------|
| LAAA/LAAB/LAAC TAS<br>204A-4 | LAAA-13282-001 |
| LAAA/LAAB/LAAC<br>TAS 206A-2 | LAAA-13283-001 |

| Machine                      | Order no.      |
|------------------------------|----------------|
| LAAA/LAAB/LAAC TAS<br>206A-6 | LAAA-13284-001 |
| LAAA/LAAB/LAAC TAS<br>210A-1 | LAAA-13285-001 |

We are already thinking about tomorrow, today.  
**Our service for you.**



## We make it easier for you than ever

myBühler provides an overview of your Bühler systems, including manuals or spare parts catalogues. Get price and material information instantly or order components directly online.



## We deliver quality

Our solutions are safe and durable, thanks to our Swiss standard that is applied worldwide.



## We are here for you

Our service network extends all over the world. We speak your language and are there immediately whenever you need us. In addition, we offer inspection, maintenance, repair and training. Around the clock, every day.

## We are ready for the future

Digital solutions have become an integral part of our lives. We simplify your everyday work with modern operating concepts and software solutions, so you can keep track of everything - anytime, anywhere.



# The right sieve for every need.

For higher yields.

Choose your ideal sieve based on harvest size, weather and type of grain. We have a range of screen sizes to suit all needs. Secure the best delivery times and save up to 10% on the sieves listed below.

| Sieve designation    | Machine<br>TAS 152A-2 / 154A-4 | Machine<br>TAS 204A-4 / 206A-2 /<br>206A-6 / 210A-1 | Product recommendation                   |
|----------------------|--------------------------------|---|--|
| Sieve TAS RV D8,00   | LAAB-13412-001                 | LAAB-14164-001                                      | Wheat, rye, feed barley                  |
| Sieve TAS RV D13,00  | LAAB-13424-001                 | LAAB-14176-001                                      | Maize, broad beans, sunflowers, soybeans |
| Sieve TAS FG 1,00x23 | LAAB-13552-001                 | LAAB-14318-001                                      | Rapeseed                                 |
| Sieve TAS FG 1,75x23 | LAAB-13567-001                 | LAAB-14333-001                                      | Rye, oats, (linseed), malt               |
| Sieve TAS FG 2,00x23 | LAAB-13572-001                 | LAAB-14338-001                                      | Malting barley                           |
| Sieve TAS FG 2,25x23 | LAAB-13600-001                 | LAAB-14343-001                                      | Wheat, feed barley, soybeans             |
| Sieve TAS FG 2,55x23 | LAAB-13606-001                 | LAAB-14349-001                                      | Maize, broad beans, sunflowers, peas     |
| Blind sieve          | LAAB-15010-001                 | LAAB-15009-001                                      | Maize                                    |

| Quantities per size* |                               |
|----------------------|-------------------------------|
| TAS 152A-2           | Pre-sieve: 4, main sieve: 4   |
| TAS 154A-4           | Pre-sieve: 8, main sieve: 8   |
| TAS 204A-4           | Pre-sieve: 8, main sieve: 8   |
| TAS 206A-2           | Pre-sieve: 4, main sieve: 12  |
| TAS 206A-6           | Pre-sieve: 12, main sieve: 12 |
| TAS 210A-1           | Pre-sieve: 2, main sieve: 20  |

\*For machines with sieve switching, only half the amount for a sieve box assembly, depending on requirements!

# Change your sieves in good time.

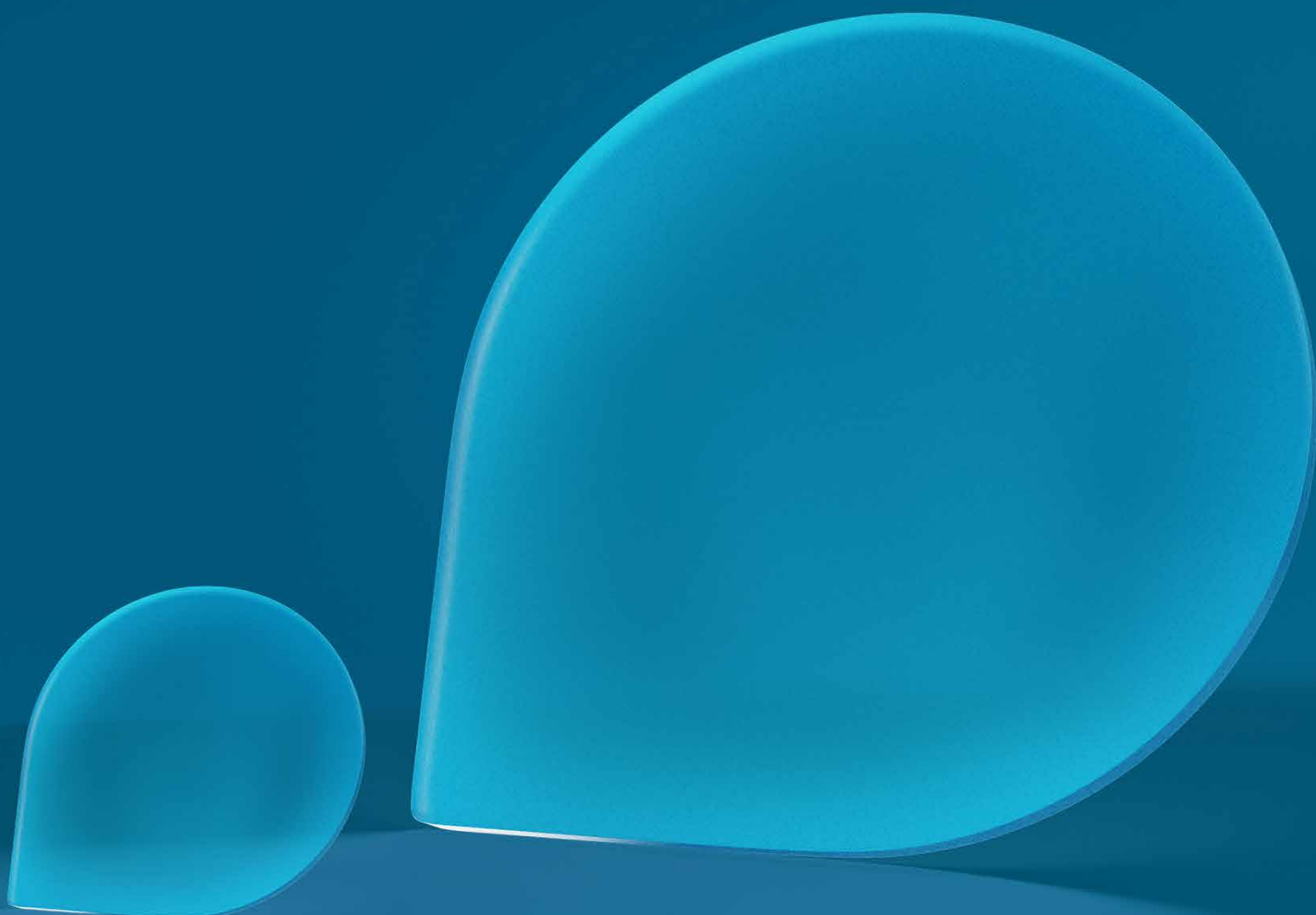
For higher yields and less product loss.

The following calculation assumes that 0.5% of the grain is lost through worn sieves, meaning that grade A wheat is falsely sold as grade C. The price difference between a ton of A and C wheat is around € 20.

|  |                 |                                     |       |
|--|-----------------|-------------------------------------|-------|
| With a turnover of 10,000 t / year, you lose approx. € 83 / month due to worn screens. |                 |                                     |       |
| Grain handling   | 10,000 t / year | Grain handling per month            | 833 t |
| Product loss due to worn sieves  | 0.5 %           | Monthly loss (in terms of quantity) | 4 t   |
| Price difference A to C wheat per ton  | € 20            | Monthly loss (in terms of value)    | € 83  |

|   |                 |                                     |         |
|---|-----------------|-------------------------------------|---------|
| With a turnover of 50,000 t / year, you lose approx. € 417 / month due to worn screens. |                 |                                     |         |
| Grain handling  | 50,000 t / year | Grain handling per month            | 4,167 t |
| Product loss due to worn sieves   | 0.5 %           | Monthly loss (in terms of quantity) | 21 t    |
| Price difference A to C wheat per ton   | € 20            | Monthly loss (in terms of value)    | € 417   |

|  |                  |                                     |          |
|--|------------------|-------------------------------------|----------|
| With a turnover of 250,000 t / year, you lose approx. € 2,083 / month due to worn screens. |                  |                                     |          |
| Grain handling   | 250,000 t / year | Grain handling per month            | 20,833 t |
| Product loss due to worn sieves  | 0.5 %            | Monthly loss (in terms of quantity) | 104 t    |
| Price difference A to C wheat per ton  | € 20             | Monthly loss (in terms of value)    | € 2,083  |



All products shown can be ordered  
via myBühler. For questions about  
myBühler please contact  
[customer.care@mybuhler.com](mailto:customer.care@mybuhler.com)

## **Bühler GmbH**

Eichstätter Str. 49  
92339 Beilngries  
Germany

[grain-quality-supply@buhlergroup.com](mailto:grain-quality-supply@buhlergroup.com)  
[buhlergroup.com](http://buhlergroup.com)