



Bühler Services
Partnering for better outcomes

Extrusion Essential

Transparency for your extrusion
operations | Digital service

Bühler Extrusion Essential gives you the transparency to optimize your production operations with a full digital production history and real-time monitoring.

Steering from one Single Source of truth for top managers

Simple and clear overview of the past and current status as well as performance of the extrusion process step for each of your extruders in one plant and also compared to extruders in other plants around the world. Make informed decisions and get your plants to the next level.

Make your production more stable at high efficiency as an operator

Get the most important KPIs and trend curves at your fingertips. Make fast corrections for stable production and highest efficiency. Get back the focus on the actual production.

Professional work preparation for production managers

Make performance and downtime analysis to optimize your production operation excellence. Check and optimize the energy consumption per recipe of your production. Get information on critical operating parameters and use the data for morning briefings with your production team.

Benefits:



Troubleshooting



Traceability and extruder «digital twin»



Minimize downtime



Increase failure comprehension



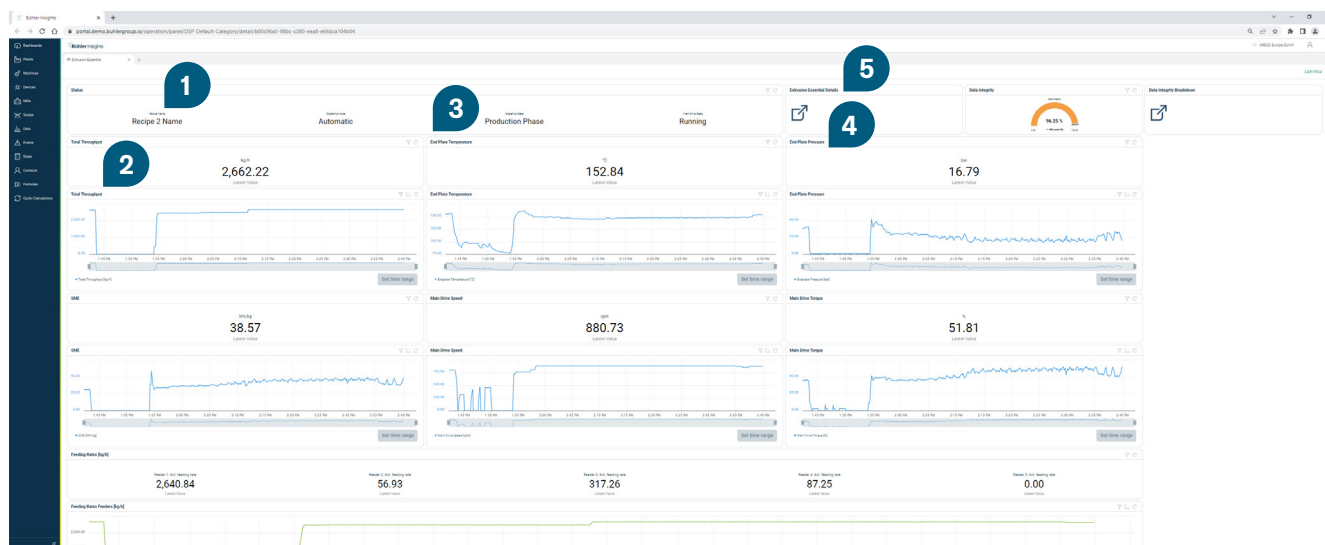
Simple and digital supported diagnosis process



24/7 access from anywhere

Extrusion Essential Digital Service

Demo Dashboard



1

Current product in production

4

End Plate Pressure

2

Total Throughput

5

Access to detailed dashboard

3

End Plate Temperature



Interested in optimizing your production operations with Extrusion Essential?

Scan the QR code to arrange a consultation with our expert team and discover how our solutions can help your business.

Bühler AG

CH-9240 Uzwil, Switzerland T +41 71 955 11 11
buhlergroup.com F +41 71 955 66 11

